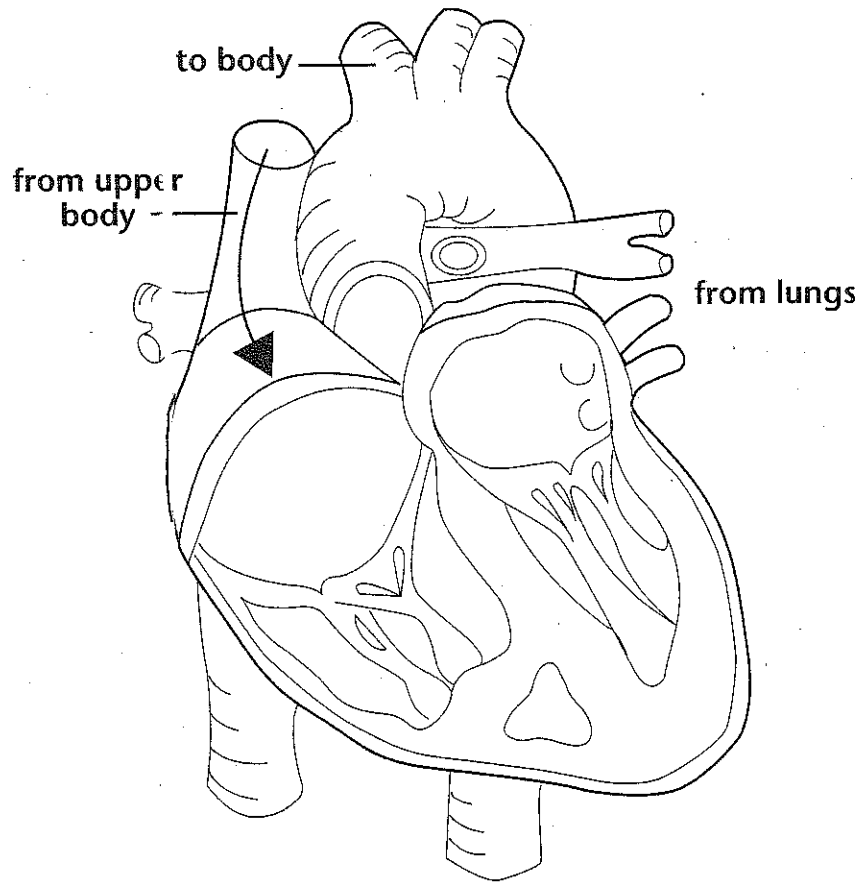


## The Human Heart

The human heart has four chambers: right atrium, right ventricle, left atrium, and left ventricle. Blood flows from the body into the right atrium. Valves keep blood flowing in only one direction.

*Follow the prompts to identify parts of the human heart. The diagram shows the heart as if viewed from the front, so left and right are switched.*

- Color the left atrium orange.
- Color the left ventricle red.
- Color the right atrium yellow.
- Color the right ventricle blue.



*Use the diagram to answer the question.*

1. A valve is located between the right atrium and the right ventricle. What is the role of valves in the heart?

---

---